

Degree Path: B.A. in Worship Leadership

College of Bible and Church Ministries

22-23 Catalog

Freshman Year

<u>Fall Semester</u>		<u>17 hours</u>
GES 1122	Strategies for Student Success ∞	
ENG 1113	Composition and Rhetoric I ∞	
MTH 1113/1123	(Math option) ∞	
MAP 1xx1	Applied Music ∞	
MUE 1xx1	Music Ensemble ∞	
MUS 1114	Music Theory I *	
REL 1173	Intro to Biblical Literature ∞	

<u>Spring Semester</u>		<u>14 hours</u>
ENG 1123	Composition and Rhetoric II ∞	
	(prereq: ENG 1113)	
BIB 1223	The Church in Ministry & Mission ∞	
MAP 1xx1	Applied Music ∞	
MUE 1xx1	Music Ensemble ∞	
MUS 1124	Music Theory II **	
MUS 2322	Intro to Music Composition ◊	

Sophomore Year

<u>Fall Semester</u>		<u>15 hours</u>
BIB 2213	Bible Study ∞	
BIO 1113/PHY 1113	(Science option) ∞	
HIS 1113	American History I ∞	
MAP 1xx1	Applied Music ∞	
PED 2232	Wellness & Lifestyle ∞	
XXX XXXX	(General Elective Course option 1)	

<u>Spring Semester</u>		<u>16 hours</u>
COM 1143	Fundamentals of Speech ∞	
LDR 1113	Intro to Leadership Internship ∞	
MAP 1xx1	Applied Music ∞	
MAP 2000	Piano Proficiency ∞	
PSY 1153	Introduction to Psychology ∞	
THE 2333	Pentecostal Doctrine & History ∞	
XXX XXXX	(General Elective Course option 2)	

Junior Year

<u>Fall Semester</u>		<u>15 hours</u>
ENG 2273 / 2233	(English option) ∞/◊	
	(ENG 2243, if preferred, is spring only)	
	(prereq: ENG 1123)	
LDR 2133	Leadership Internship 1 ◊	
MAP 3xx1	Applied Music ∞	
MUS 3332	Songwriting *	
THE 2213	Intro to Theology & Apologetics ∞	
XXX XXXX	(General Elective Course option 3)	

<u>Spring Semester</u>		<u>18 hours</u>
GOV 2213	National & State Government ∞	
LDR 3133	Leadership Internship 2 ∞	
MAP 3xx1	Applied Music ∞	
MED 2413	Audio Production for Music ◊	
MUS 3312	Choral Conducting ◊	
	(MUS 3322, if preferred, is fall only)	
REL 1133	Authentic Christianity ∞	
THE 3133	Systematic Theology 2 ◊	

Senior Year

<u>Fall Semester</u>		<u>16 hours</u>
CMN 3163	Leadership in Ministry ◊	
MAP 3xx1	Applied Music ∞	
MUS 3333	Church Music History ◊	
MED 3283	Worship Technologies ◊	
REL 3153	Christian Ethics ∞	
XXX XXXX	(General Elective Course option 4)	

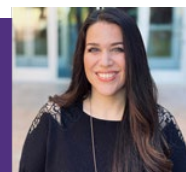
<u>Spring Semester</u>		<u>13 hours</u>
BIB 3233	Biblical Principles of Worship **	
MAP 3xx1	Applied Music ∞	
MAP 4010	Senior Recital ***	
MUS 4123	Worship Leadership ◊	
	(Course offered online only)	
XXX XXXX	(General Elective Course option 5)	
XXX XXXX	(General Elective Course option 6)	

Please Note:

- *This sample schedule is only a suggested path and does not reflect individual variation necessary due to course-offering alterations, change of major, retaking of courses, transfer credits, spring start, summer courses, or conditional acceptance.*
- You should consult your department chair, program coordinator, course scheduler, and peer advisor regarding how your specific circumstance will affect your sequence of these courses for graduation completion.
 - ∞ every fall and spring semester
 - * only that semester in odd years
 - *** to be taken *only* in specified semester
 - ◊ every year only fall/spring/summer (as listed)
 - ** only that semester in even years
 - ∞/◊ offering differs in order listed



Your Program Coordinator:
Meredith Jones, M.M.
Director of SAGU Worship
mjones@sagu.edu



Degree Path: B.A. in Worship Leadership

College of Bible and Church Ministries

22-23 Catalog

OVERVIEW

Worship Leadership is a ministry preparation program fashioned in light of the leadership curriculum established in the College of Bible and Church Ministries. This is for the development of worship pastors who serve the musical needs of the Church, while serving as part of a pastoral team. In addition to the Bible core, the curriculum places an emphasis on both leadership and music courses and includes hands-on internship required credit hours.

CAREER OPPORTUNITIES

Because the Worship Leadership degree is designed to prepare students for vocational ministry, most of our graduates go on to become worship pastors, music directors, or creative arts pastors. This degree program also has a significant emphasis on musical knowledge and an introduction to audio engineering training, which enables students to pursue the fields of music teaching, vocal coaching, songwriting, music performance, and audio production.

PROGRAM HIGHLIGHTS

The Worship Leadership degree through SAGU provides valuable training and preparation for students who want to pursue worship ministry. This program promotes a well-rounded approach to music ministry because of the dual focus on courses that both develop musical mastery and cultivate leadership abilities. Worship Leadership students have four internship courses built into the degree, which allow them to partner with local church worship departments.

Highlights of this degree include specialized courses, such as: Music Theory 1 & 2, Songwriting, Audio Production and Aesthetics, Worship Technologies, and Senior Recital (which gives students the opportunity to lead the campus in a night of worship).

Our students are taught by accomplished faculty with years of experience in vocational ministry and musical expertise.

PROGRAM REQUIREMENTS

GENERAL EDUCATION STUDIES 55 Hours

General Education: 14 hours

- COM 1143 Fundamentals of Speech Communication
- ENG 1113 Composition and Rhetoric I
- ENG 1123 Composition and Rhetoric II
- GES 1122 Strategies for Student Success
- 3 hours from the following:
 - ENG 2273 Introduction to Literature
 - ENG 2233 American Literature through Civil War
 - ENG 2243 American Literature after the Civil War

Social/Behavioral Sciences: 9 hours

- GOV 2213 National and State Government
- HIS 1113 American History I
- PSY 1153 Introduction to Psychology

Natural Science/Mathematics: 6 hours

- 3 hours from the following:
 - BIO 1113 Biological Sciences
 - PHY 1113 Physical Science
- 3 hours from the following:
 - MTH 1113 College Mathematics
 - MTH 1123 College Algebra

Humanities/Fine Arts: 6 hours

- 4 hours from MAP 1000 Applied Major area
- 2 hours from MUE Music Ensembles

Physical Education: 2 hours

- PED 2232 Wellness and Lifestyle

General Biblical Studies: 18 hours

- BIB 1223 The Church in Ministry and Mission
- BIB 2213 Bible Study
- REL 1133 Authentic Christianity
- REL 1173 Introduction to Biblical Literature
- THE 2113 Introduction to Theology and Apologetics
- THE 2333 Pentecostal Doctrine and History

MAJOR STUDIES 51 Hours

Core Studies: 16 hours

- MAP 2000 Piano Proficiency +
- MAP 3000 4 hours Applied Primary Area++
- MAP 4010 Senior Recital
- MUS 1114 Music Theory I
- MUS 1124 Music Theory II
- MUS 2322 Introduction to Music Composition
- 2 hours from the following:
 - MUS 3312 Choral Conducting
 - MUS 3322 Instrumental Conducting

Professional Development: 35 hours

- BIB 3233 Biblical Principals of Worship
- CMN 3163 Leadership in Ministry
- LDR 1113 Introduction to Leadership Internship
- LDR 2133 Leadership Internship I
- LDR 3133 Leadership Internship II
- MED 2413 Audio Production for Music
- MED 3283 Worship Technologies
- MUS 3332 Songwriting
- MUS 3333 Church Music History
- MUS 4123 Worship Leadership
- REL 3153 Christian Ethics
- THE 3133 Systematic Theology II

+Piano Placement Assessment (PPA) is given to determine piano readiness at the beginning of the first semester of study.

++Prerequisite: Successful completion of the respective Proficiency Exams (IPE-MAP 2200, PPE-MAP 2000, VPE-MAP2100)

MINOR STUDIES/GENERAL ELECTIVES 18 Hours

Including at least six hours of upper-level courses. May include official minors or purely elective hours.

- 18 hours of student's choice

TOTAL PROGRAM REQUIREMENTS 124 Hours



Revised on 08/11/2023

Your Department Chair:
Dr. Darren Daugherty
SAGU Professor of Child/Fam Min.
dbaugherty@sagu.edu

